



GHG QUANTIFICATION IN COFFEE PRODUCTION

LESSONS LEARNED FOR ADAPTATION AND MITIGATION

CHIAPAS, MEXICO
2013-2016

Solidaridad



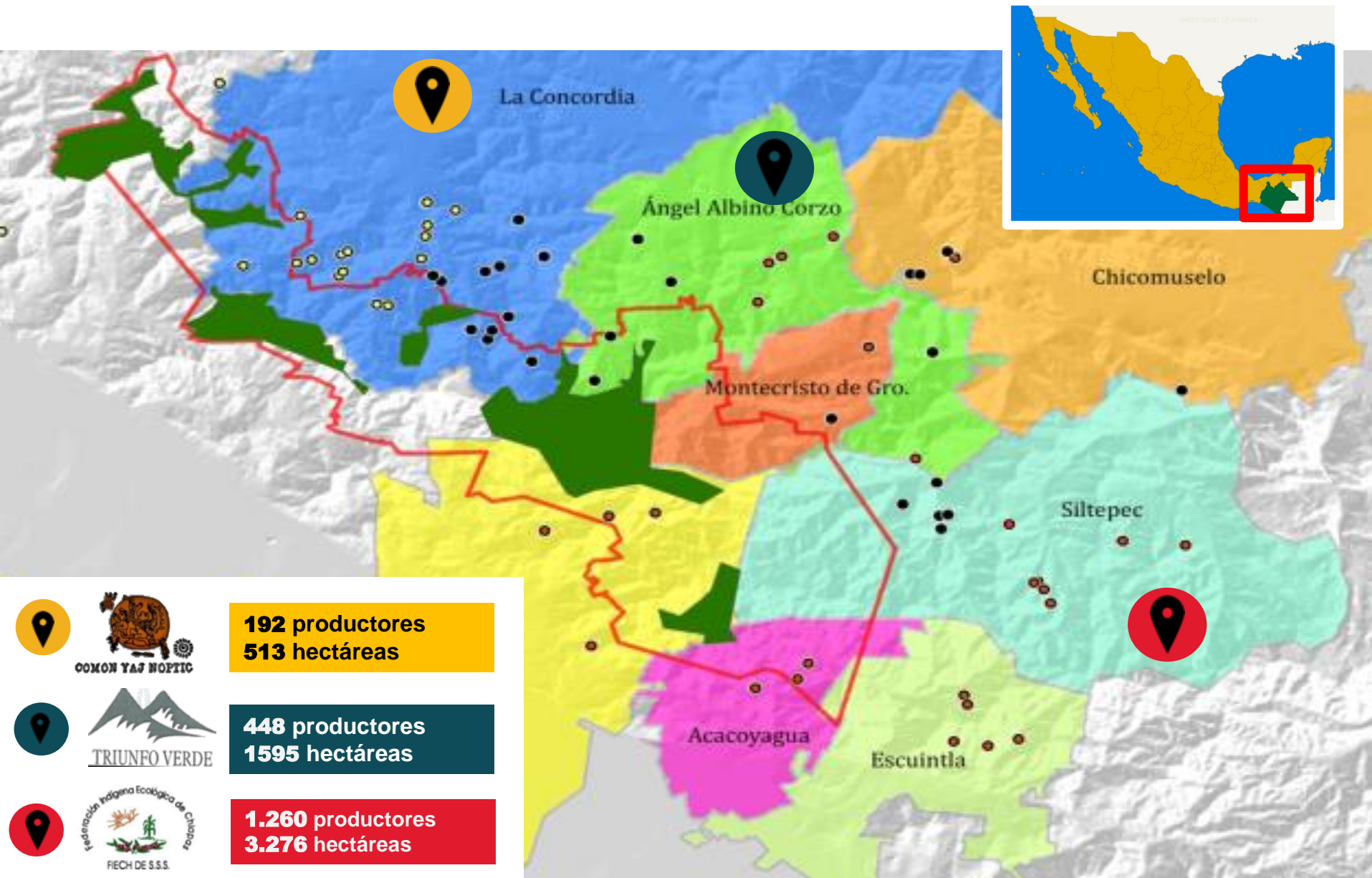
ESTABLISHING THE BASELINE WITH THE COOL FARM TOOL

Key questions to answer:

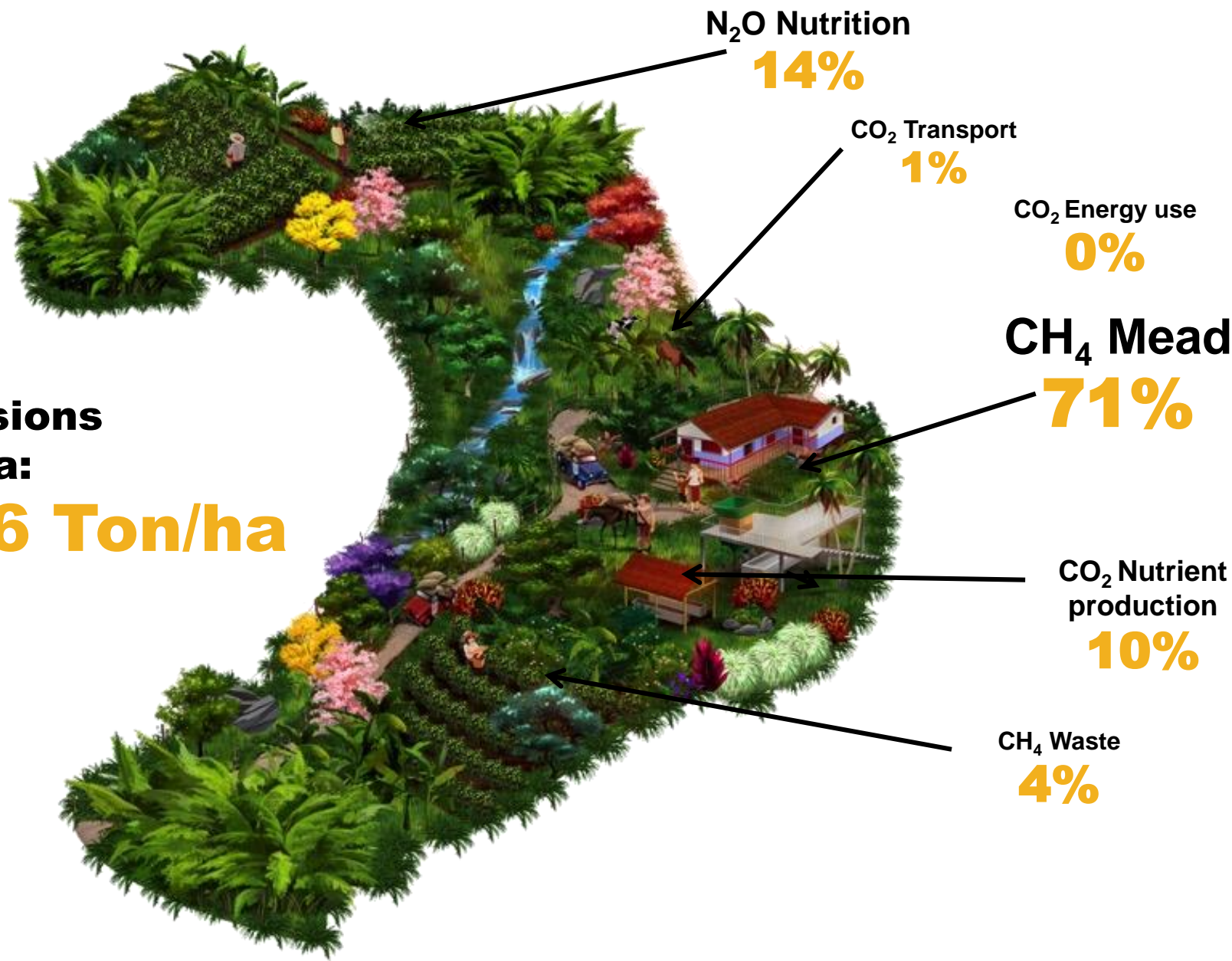
- How to generate reliable and consistent data by and for smallholders?
- What practices generate most GHG emissions at farm level?
- How to mitigate and adapt at farm level?



2 SELECTING THE SAMPLE FARMS



3 ANALYZING RESULTS AT FARM LEVEL

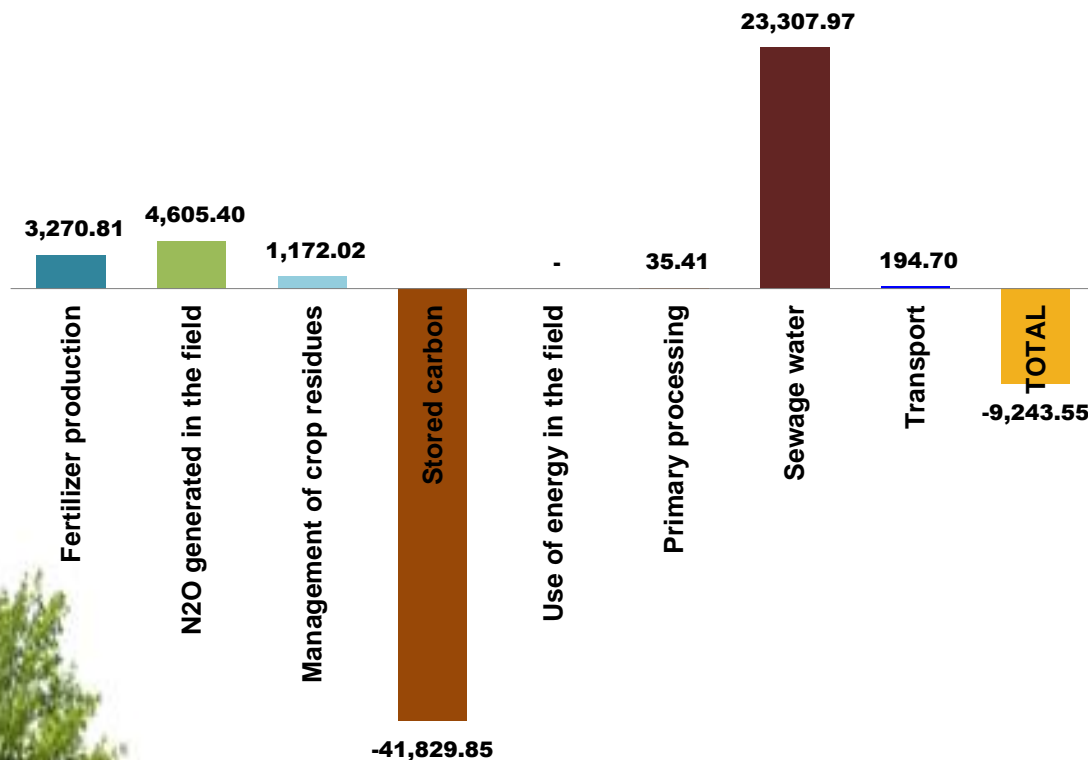


**Total
emissions
per ha:**

6.16 Ton/ha

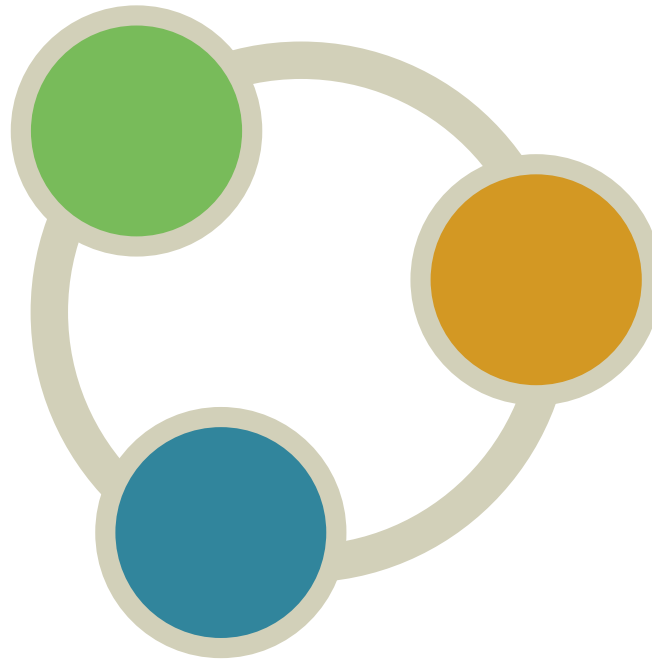
4

LINKING GHG EMISSIONS TO FARM PRACTICES



5 THE INTERVENTIONS

Productivity
and quality



Adaptation

Mitigation

6 MEASURE THE RESULTS

- ▶ Reduction of GHG emission at farm level:
74%
- ▶ Increase of productivity at farm level:
333%
- ▶ Quality improvement:
30%

LESSONS LEARNED

- ▶ **GOOD DATA IS KEY**
- ▶ **ADAPTATION IS A MUST, MITIGATION IS GOOD TO HAVE**
- ▶ **EMPHASIS ON DIRECT AND MULTIPLYING BENEFITS FOR PRODUCERS AND COMMUNITIES (BIOGAS)**
- ▶ **THERE'S NO CASE OF VERIFICATION AND CERTIFICATION FOR SMALL HOLDERS**
- ▶ **NO FINANCIAL PRODUCTS THAT FIT THE NEEDS OF THE PRODUCERS**



RODOLFO GARCÍA RODRÍGUEZ

RODOLFO@SOLIDARIDADNETWORK.ORG



solidaridadnetwork.org



/solidaridadnetwork



@solidaridadnetw



/company/solidaridad